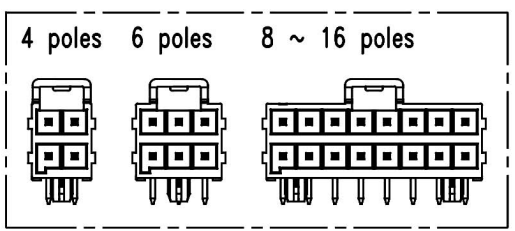
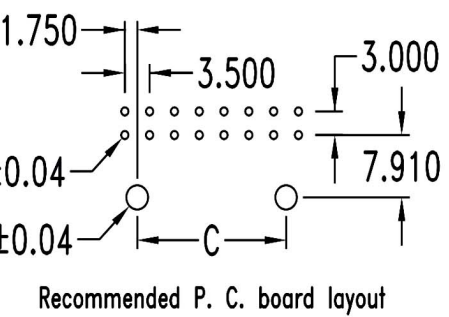
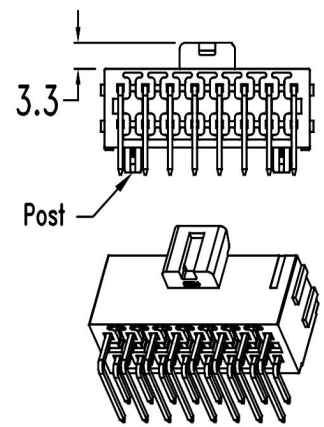
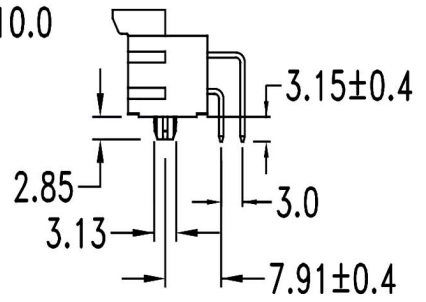
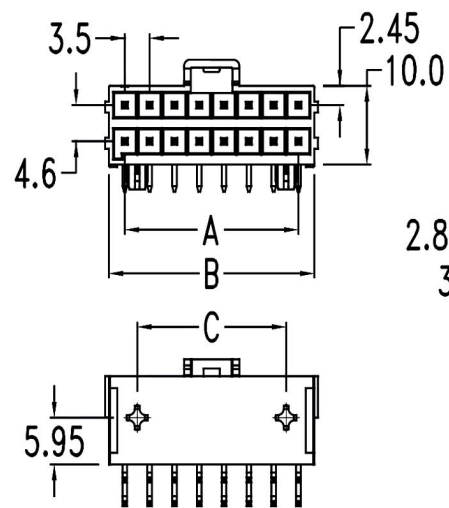
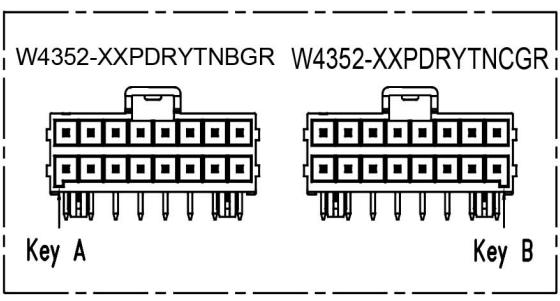
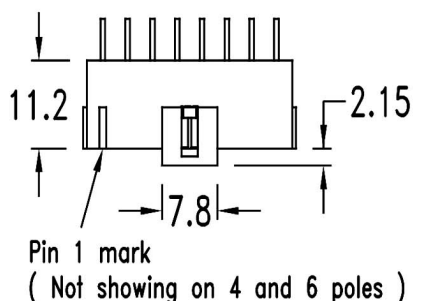


1 2 3 4 5 6 7 8

A
B
C
D
E
F
G
H

A
B
C
D
E
F
G
H



Features:

- 4 ~ 16 circuits available
- Housing material: LCP
- Pin material: High conductivity copper alloy
- Finished: Tin-plated 100u" over copper 50u"
- .025"(0.64mm) square pin

Specification:

- Current rating: 8A at #16 AWG
- Voltage rating: 400V AC(RMS) or 400V DC Max.
- Contact resistance: 10mΩ Max.
- Dielectric withstanding voltage: 1800V AC/minute
- Ambient temperature range: -40°C ~ 105°C

Ordering Information

Part No.	Feature	Type	Color
W4352-XXPDRYTNBGR	With post	Key A	Black
W4352-XXPDRYTNCGR		Key B	Natural

&& xx = 04 ~ 16

Dimensional Information (mm)

Circuits	Dim. A	Dim. B	Dim. C
4	3.5	8.0	
6	7.0	11.5	
8	10.5	15.0	7.0
10	14.0	18.5	10.5
12	17.5	22.0	14.0
14	21.0	25.5	17.5
16	24.5	29.0	21.0

RoHS Compliant

HSM 玄茂科技股份有限公司
HSUAN MAO TECHNOLOGY CO., LTD.

APPD. 核准
DWG. 製圖 Betty
DATE 制表日
2020/01/14

UNLESS OTHERWISE SPECIFIED TOLERANCE
.000 ± 0.15 (mm)
.00 ± 0.25 (mm)
.0 ± 0.4 (mm)
SCALE 比例 參考
UNIT 單位 MM
PAGE 張數 1 OF 1
REV. 版次 A

PART NAME 品名
3.5mm Wafer Dual Row 2XXXPin 90°
With Locating Peg Tin Plating
Material:LCP Bag Packing ROHS
PART NO.
料號 W4352-XXPDRYTNXGR

1 2 3 4 5 6 7 8