

NOTES:

SPECIFICATION

- 1. Current : 5A max.
- 2. Voltage: 250V AC max.
- 3. Insulation Resistance: 1000 MΩ min.
- 4. Contact Resistance: 10mΩ max.
- 5. Dielectric Withstanding Voltage: 1500V AC
- 6. Temperature: -40°C to +105°C

MATERIAL

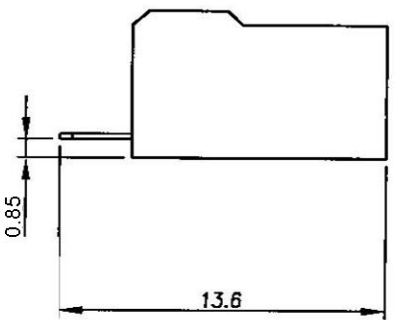
- 1. Contact: Brass
- 2. Housing: Nylon, UL 94V-2

ORDERING INFORMATION

W
1396
—
XX
P
B
X
X
W
0

- | | | |
|--|--|---|
| <p>1. PRODUCTS:
W: Wafer</p> <p>2. SERIES NO.:
1396</p> <p>3. CONTACT NO.:
02-25</p> | <p>4. CONTACT TYPE:
P: Non Distribution</p> <p>5. FUNCTION:
A: 90°
B: 360°
C: 180°</p> <p>6. BODY OPTION:
Y: With Locking Rib
N: Without Locking Rib</p> | <p>7. CONTACT PLATING:
T: Tin
S: Selective Gold
G: Gold Flash
H: Selective Gold 15U"</p> <p>8. INSULATOR COLOR:
W: White</p> <p>9. FILL IT WITH "0"</p> |
|--|--|---|

NO. OF CONTACT	Dimension		NO. OF CONTACT	Dimension	
	A	B		A	B
02	3.96	8.06	10	35.64	39.74
03	7.92	12.02	11	39.60	43.70
04	11.88	15.98	12	43.56	47.66
05	15.84	19.94	13	47.52	51.62
06	19.80	23.90	14	51.48	55.58
07	23.76	27.86	15	55.44	59.54
08	27.72	31.82	16	59.40	63.50
09	31.68	35.78			



RoHS Compliant

HSM 玄茂科技股份有限公司

HSUAN MAO TECHNOLOGY CO., LTD.

APPD. 核准 DWG. 製圖 DATE 制表日	HELEN 2008/12/05	<p>TOLERANCE 容許公差 0 ± 0.35 .00 ± 0.10 ANG ±</p> <p>SCALE 比例 參考</p> <p>UNIT 單位 MM</p> <p>PAGE 張數 1 OF 1</p>	PART NAME 品名 3.96mm WAFER 1XXXP BOTTOM ENTRY TYPE WITHOUT LOCKING RIBS WHITE INSULATOR ROHS LOW-LEAD PART NO. 料號 W1396-XXPBNXWOR
---------------------------------	---------------------	--	--