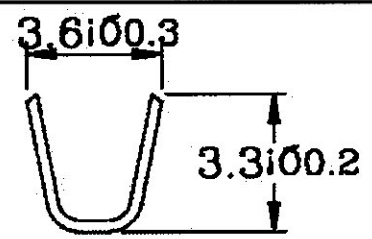
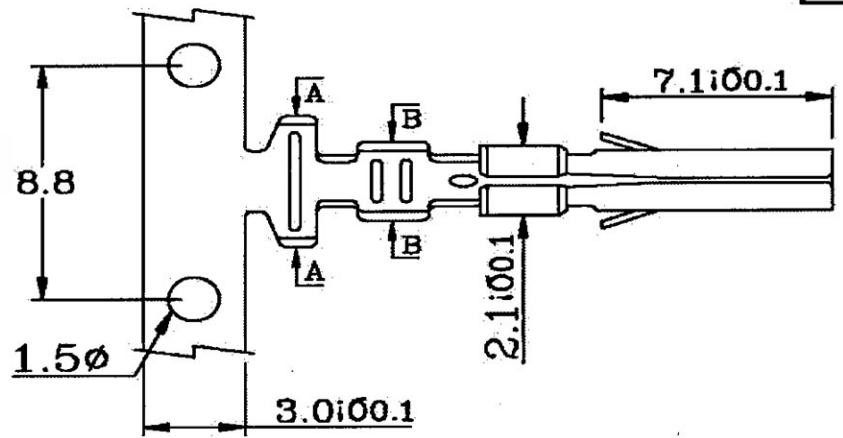
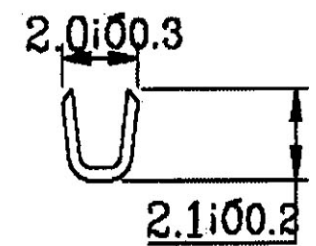


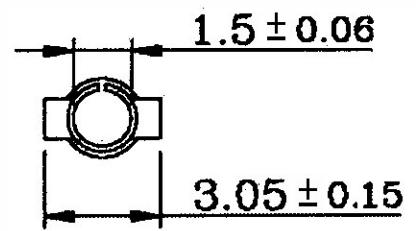
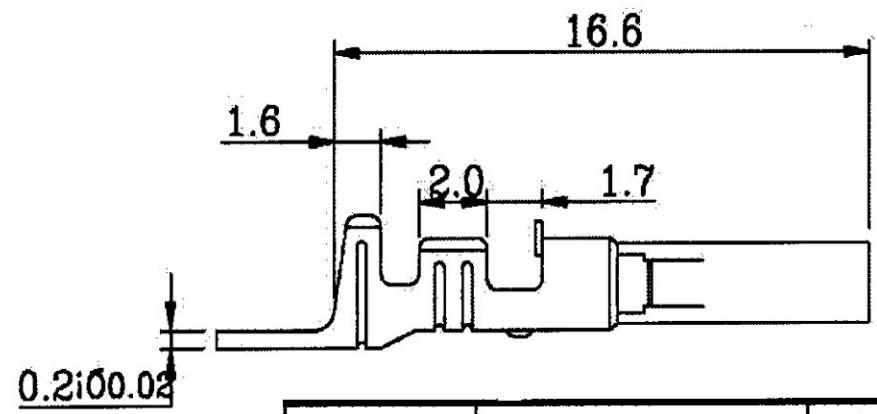
1.58mm (.062") Diameter Female Terminal



Section A-A



Section B-B



Thickness	Material	Wire Range	Insulation O.D.	Finish	Qty/reel
0.2	Brass	AWG #18~24	2.8-1.4 mm	Pre. Tin-Plated	7,000 PCS

RoHS Compliant		HSM 玄茂科技股份有限公司 HSUAN MAO TECHNOLOGY CO., LTD.	
APPD. 核准	SCALE 比例	TOLERANCE 容許公差 0 ± 0.25 .00 ± 0.13 ANG ±	PART NAME 品名 φ 1.58mm FEMALE TERMINAL BRASS MATERIAL TIN PLATING AWG18~24 ROHS LOW-LEAD
DWG. 製圖 HELEN	UNIT 單位 M M	SIZE 線規尺寸 A 4	PART NO. 料號 T1158-TBE00000R
DATE 制表日 2008/9/19	PAGE 張數 1 OF 1	REV. 版本 A	