

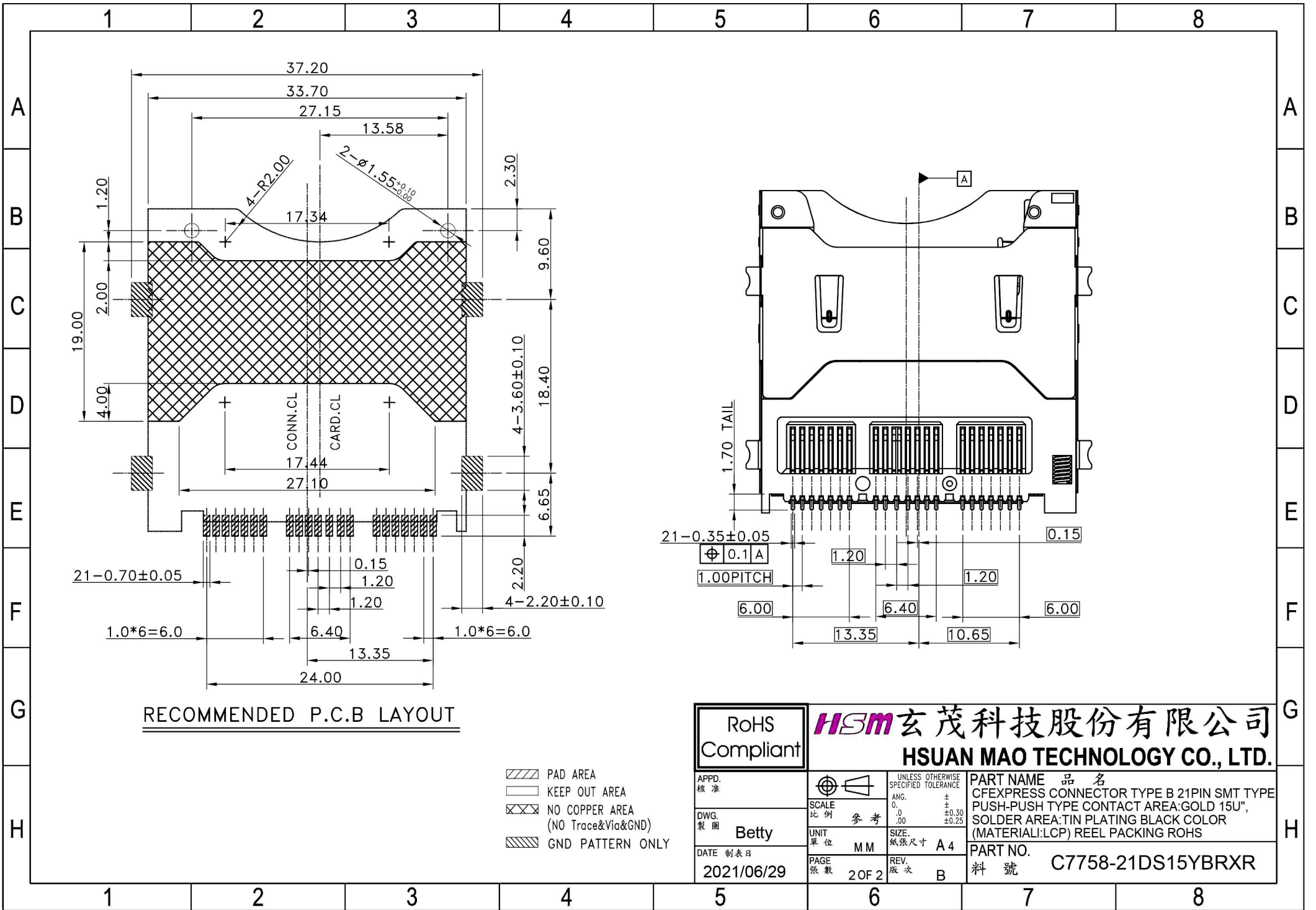
RoHS
Compliant

HSM 玄茂科技股份有限公司
HSUAN MAO TECHNOLOGY CO., LTD.


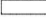


APPD.
核准
Betty
DATE 制表日
2021/06/29

UNLESS OTHERWISE SPECIFIED TOLERANCE
 ANG. ±
 0. ±
 .00 ±0.30
 ±0.25
 SCALE 比例 参考
 UNIT 單位 MM
 PAGE 張數 1 OF 2
 REV. 版次 B

PART NAME 品名
CFEXPRESS CONNECTOR TYPE B 21PIN SMT TYPE
PUSH-PUSH TYPE CONTACT AREA:GOLD 15U",
SOLDER AREA:TIN PLATING BLACK COLOR
(MATERIAL:LCP) REEL PACKING ROHS
PART NO.
料號 C7758-21DS15YBRXR



RECOMMENDED P.C.B LAYOUT

-  PAD AREA
-  KEEP OUT AREA
-  NO COPPER AREA (NO Trace&Via&GND)
-  GND PATTERN ONLY

RoHS Compliant		 玄茂科技股份有限公司 HSUAN MAO TECHNOLOGY CO., LTD.	
APPD. 核准 DWG. 製圖 DATE 制表日 2021/06/29	Betty 2021/06/29	UNLESS OTHERWISE SPECIFIED TOLERANCE ANG. 0.0 ±0.30 .00 ±0.25 SCALE 比例 參考 UNIT 單位 MM PAGE 張數 2 OF 2 REV. 版次 B	PART NAME 品名 CFEXPRESS CONNECTOR TYPE B 21PIN SMT TYPE PUSH-PUSH TYPE CONTACT AREA:GOLD 15U", SOLDER AREA:TIN PLATING BLACK COLOR (MATERIAL:LCP) REEL PACKING ROHS PART NO. 料號 C7758-21DS15YBRXR