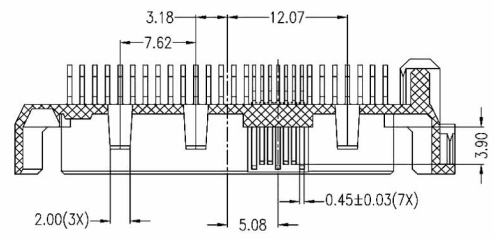


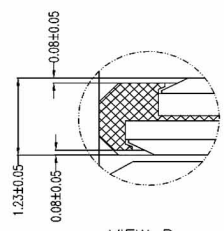
1 2 3 4 5 6 7 8

A
B
C
D
E
F
G
H

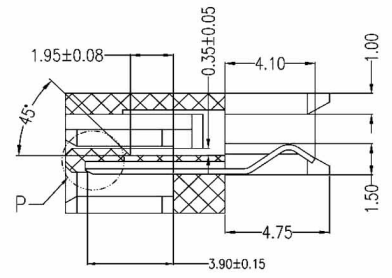
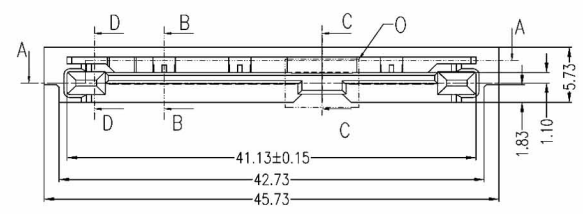
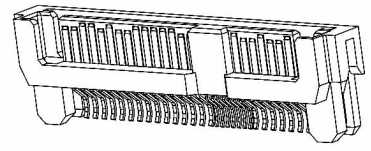
A
B
C
D
E
F
G
H



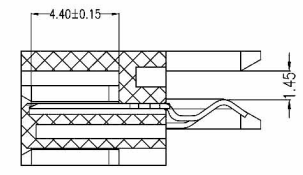
SECT A-A



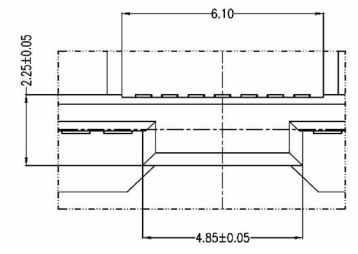
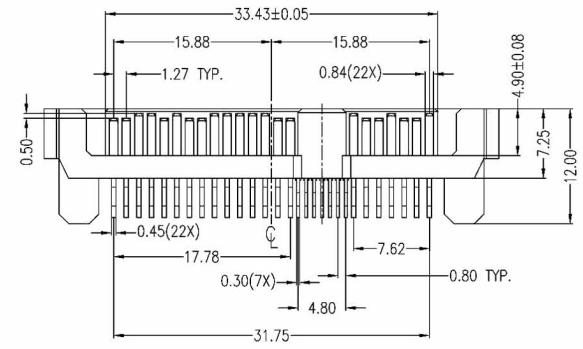
VIEW P
SCALE 6:1



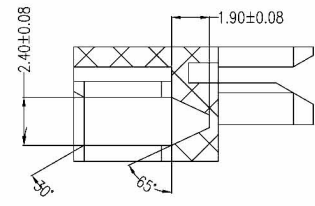
SECT B-B
SCALE 2:1



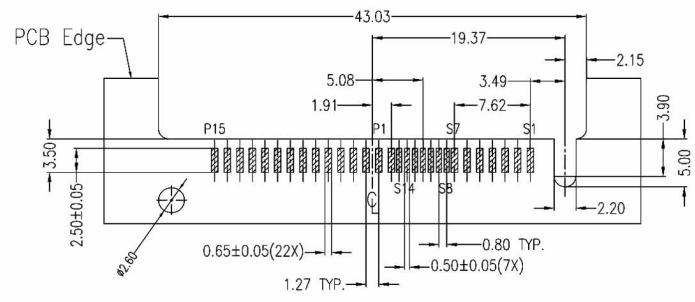
SECT C-C
SCALE 2:1



VIEW O
SCALE 3:1



SECT D-D
SCALE 2:1



PCB LAYOUT(T=1.60mm)
COMPONENT SIDE

NOTES:

- Material:**
Housing: LCP+50%G.F, UL 94V-0 Rated.
Color: Black.
Contact: Phosphor Bronze.
Plating: Gold Plating over Nickel on Contact Area.
Tin Plating on Solder Tail.
- Mechanical:**
Insertion Force: 25N Max.
Withdrawal Force: 5N Min.
Durability: 500 Cycles
- Electrical Specification:**
Current Rating: 1.5 Ampere per Contact.
Contact Resistance: 30mΩ Max.
Insulation Resistance: 1000MΩ Min.
Dielectric Withstanding Voltage: 500 VAC.
- Environmental:**
Operating Temperature: 0°C to +55°C

Signal Segment	
Pin NO.	Type
S1	GND
S2	A+
S3	A-
S4	GND
S5	B-
S6	B+
S7	GND
S8	GND
S9	A+
S10	A-
S11	GND
S12	B-
S13	B+
S14	GND

Power Segment	
Pin NO.	Type
P1	V33
P2	V33
P3	V33
P4	GND
P5	GND
P6	GND
P7	V5
P8	V5
P9	V5
P10	GND
P11	DAS/DSS
P12	GND
P13	V12
P14	V12
P15	V12

RoHS Compliant		玄茂科技股份有限公司 HSUAN MAO TECHNOLOGY CO., LTD.	
APPD. 核准 Betty	SCALE 比例 参考	UNLESS OTHERWISE SPECIFIED DIMENSIONS ARE IN MM TOLERANCES ARE: DECIMALS ANGLES X ± .25 ° ± 3° XX ± .25 ° ± 3° XXX ± .25	PART NAME 品名 SAS CONNECTOR SINGLE SIDE 29P(7+7+15) MALE STRADDLE TYPE FOR 1.6mm P.C.B THICKNESS BLACK COLOR ROHS
DWG. 製圖 Betty	UNIT 單位 MM	SIZE 紙張尺寸 A 4	PART NO. 料號 C7210-29MNBXB0R
DATE 制表日 2013/07/17	PAGE 張數 1 OF 1	REV. 版次 A	

1 2 3 4 5 6 7 8