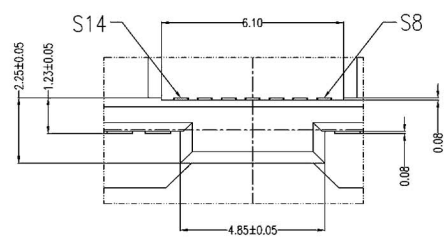
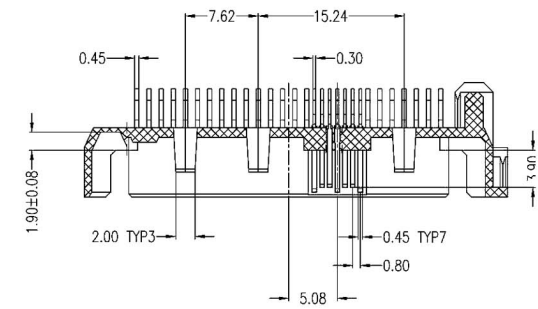
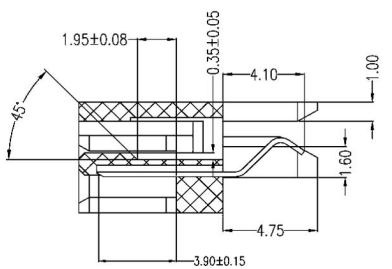
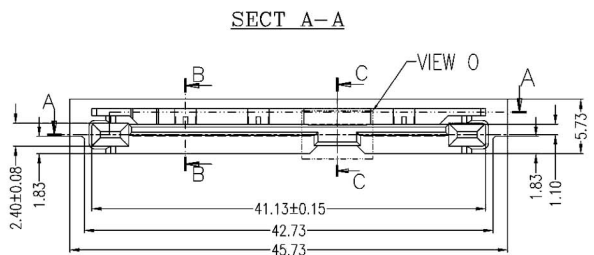


1 2 3 4 5 6 7 8

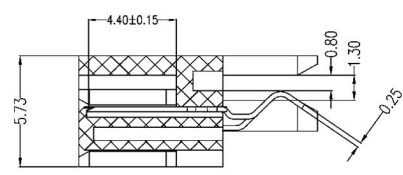
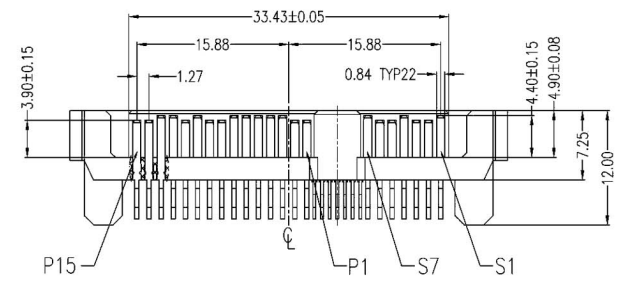
A



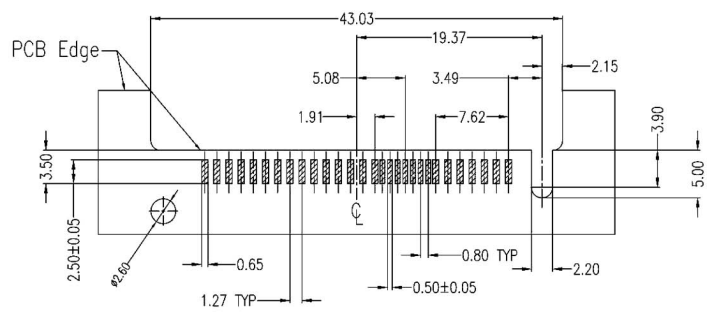
VIEW O
SCALE 3:1



SECT B-B
SCALE 2:1



SECT C-C
SCALE 2:1



P.C.B LAYOUT (T=1.00mm)
TOP VIEW

NOTES:

- Material:**
Housing: LCP+50%G.F, UL 94V-0 Rated.
Color: Black.
Contact: Phosphor Bronze.
Plating: Gold Plating over Nickel on Contact Area.
Tin Plating on Solder Tail.
- Mechanical:**
Insertion Force: 25N Max.
Withdrawal Force: 5N Min.
Durability: 500 Cycles
- Electrical Specification:**
Current Rating: 1.5 Ampere per Contact.
Contact Resistance: 30mΩ Max.
Insulation Resistance: 1000MΩ Min.
Dielectric Withstanding Voltage: 500 VAC.
- Environmental:**
Operating Temperature: 0°C to +55°C

Signal Segment	
Pin NO.	Type
S1	GND
S2	A+
S3	A-
S4	GND
S5	B-
S6	B+
S7	GND
S8	GND
S9	A+
S10	A-
S11	GND
S12	B-
S13	B+
S14	GND

Power Segment	
Pin NO.	Type
P1	V33
P2	V33
P3	V33
P4	GND
P5	GND
P6	GND
P7	V5
P8	V5
P9	V5
P10	GND
P11	DAS/DSS
P12	GND
P13	V12
P14	V12
P15	V12

B

C

D

E

F

G

H

A

B

C

D

E

F

G

H

1 2 3 4 5 6 7 8

RoHS
Compliant

HSM 玄茂科技股份有限公司
HSUAN MAO TECHNOLOGY CO., LTD.

APPD. 核准 Betty
DWG. 製圖 Betty
DATE 制表日 2013/07/17

SCALE 比例 參考
UNIT 單位 MM
PAGE 張數 1 OF 1

PART NAME 品名
SAS CONNECTOR SINGLE SIDE 29P(7+7+15) MALE STRADDLE TYPE FOR 1.0mm P.C.B THICKNESS BLACK COLOR ROHS
PART NO. C7210-29MNAXB0R
料號