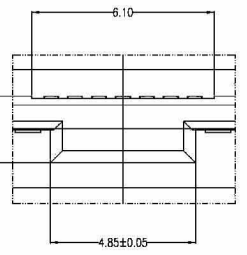


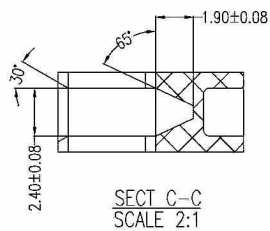
NOTES:

- Material:**
 Housing: LCP+50%G.F, UL 94V-0 Rated.
 Color: Black.
 Contact: Phosphor Bronze.
 Plating: Gold Plating over Nickel on Contact Area.
 Tin Plating on Solder Tail.
- Mechanical:**
 Insertion Force: 25N Max.
 Withdrawal Force: 5N Min.
 Durability: 500 Cycles
- Electrical Specification:**
 Current Rating: 1.5 Ampere per Contact.
 Contact Resistance: 30mΩ Max.
 Insulation Resistance: 1000MΩ Min.
 Dielectric Withstanding Voltage: 500 VAC.
- Environmental:**
 Operating Temperature: 0°C to +55°C

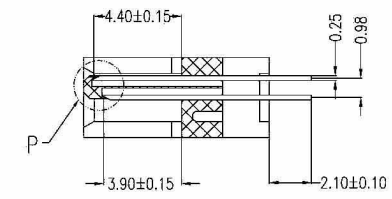
Signal Segment		Power Segment	
Pin No.	Type	Pin No.	Type
S1	GND	P1	V33
S2	A+	P2	V33
S3	A-	P3	V33
S4	GND	P4	GND
S5	B-	P5	GND
S6	B+	P6	GND
S7	GND	P7	V5
S8	GND	P8	V5
S9	A+	P9	V5
S10	A-	P10	V5
S11	GND	P11	DAS/OSS
S12	B-	P12	GND
S13	B+	P13	V12
S14	GND	P14	V12
		P15	V12



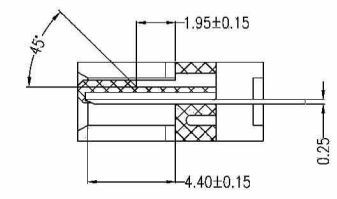
VIEW O
SCALE 3:1



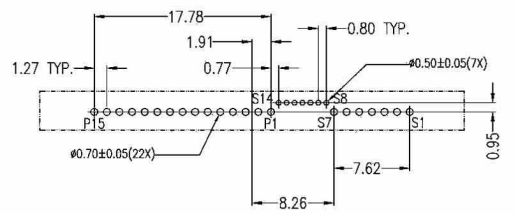
SECT C-C
SCALE 2:1



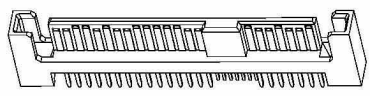
SECT A-A
SCALE 2:1



SECT B-B
SCALE 2:1



PCB LAYOUT(T=1.60mm)
COMPONENT SIDE



RoHS Compliant		HSM 玄茂科技股份有限公司 HSUAN MAO TECHNOLOGY CO., LTD.	
APPD. 核准 Betty		UNLESS OTHERWISE SPECIFIED DIMENSIONS ARE IN MM TOLERANCES ARE: DECIMALS ANGLES .X ± .38 ± 3° .XX ± .25 .XXX ± .20	PART NAME 品名 SAS CONNECTOR 29P(7+7+15) MALE SINGLE ROW STRAIGHT TYPE DIP LENGTH=2.1mm SELECTIVE GOLD 30U" PLATING BLACK COLOR(MATERIAL:LCP) ROHS
DWG. 製圖 Betty	SCALE 比例 參考	SIZE. 紙張尺寸 A 4	PART NO. C7200-29MASIB0R
DATE 制表日 2013/06/21	UNIT 單位 M M PAGE 張數 1 OF 1	REV. 版次 A	料號