

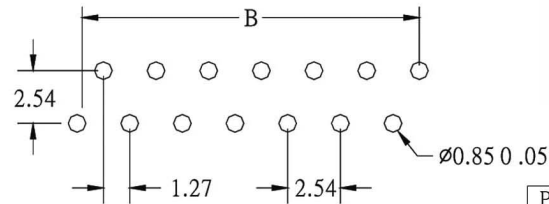
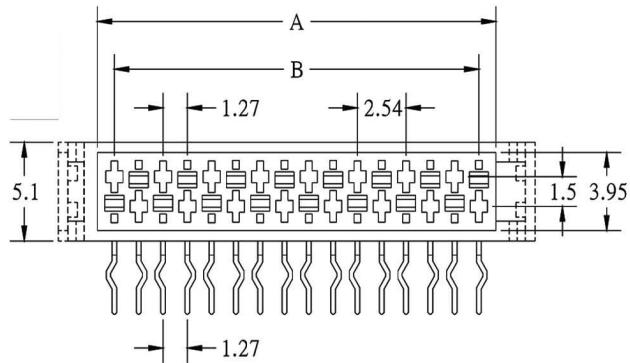
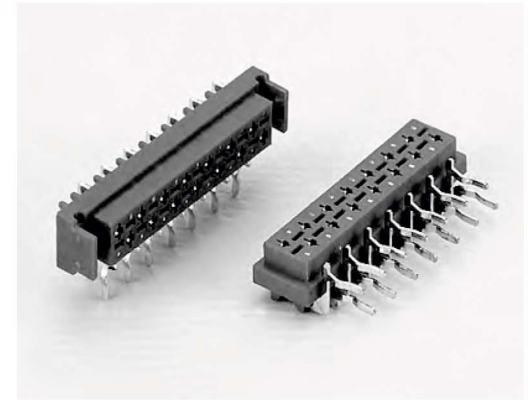
SPECIFICATIONS

Material

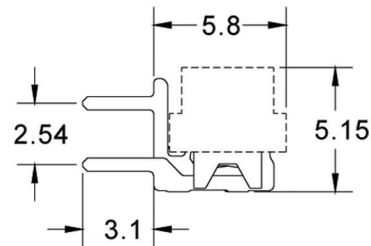
Insulator : PBT, glass reinforced, rated UL 94V-0
 Contact : Phosphor Bronze

Electrical

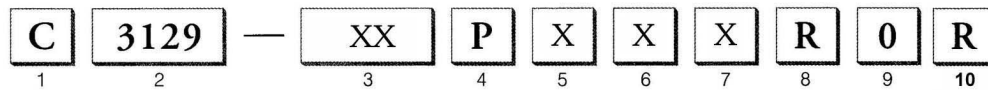
Current Rating : 1 Amp
 Contact Resistance : 30 mΩ max.
 Insulation Resistance : 3000 MΩ min.
 Dielectric Withstanding Voltage : 500V AC for 1minute
 Operating Temperature : -40°C to +105°C



RECOMMENDED P.C.B LAYOUT



POSITION	A	B	C	D
4	5.59	3.81	9.68	6.98
6	8.13	6.35	12.22	9.52
8	10.67	8.89	14.76	12.06
10	13.21	11.43	17.30	14.60
12	15.75	13.97	19.84	17.14
14	18.29	16.51	22.38	19.68
16	20.83	19.05	24.92	22.22
18	23.37	21.59	27.46	24.76
20	25.91	24.13	30.00	27.30
22	28.45	26.67	32.54	29.84
24	30.99	29.21	35.08	32.38
26	33.53	31.75	37.62	34.92



- | | | | |
|--|---|--|------------------------------|
| 1. PRODUCTS:
C:Connector | 5. SPECIAL FUNCTION:
Y:W/Polarization
N:W/O Polarization
(Normal Type) | 7. CONTACT PLATING:
T:Tin
S:Selective Gold
G:Gold Flash | 8. INSULATOR COLOR:
R:Red |
| 2. SERIES NO.:
3129 | 6. PARTS OPTION:
Y:W/Locking
N:W/O Locking | 9. FILL IT WITH "0" | 10. ROHS LOW-LEAD |
| 3. CONTACT NO.:
04-26 | | A:Gold 5U"
B:Gold 10U"
C:Gold 15U"
D:Gold 30U" | |
| 4. CONTACT MATERIAL:
P:Phosphor Brass | | | |

RoHS Compliant		HSM 玄茂科技股份有限公司 HSUAN MAO TECHNOLOGY CO., LTD.	
APPD. 核准	SCALE 比例 参考	TOLERANCE 容許公差 .0 ± .00 ± ANG. ±	PART NAME 品名 2.54mm MICRO-MATCH MINLATURE CONNECTOR FEMALE ON BOARD SIDE ENTRY TYPE XXP PHOSPHOR BRASS RED INSULATOR TUBE PACKING ROHS LOW-LEAD
DWG. 製圖 Hedy	UNIT 單位 MM	SIZE. 紙張尺寸 A4	PART NO. 料號 C3129-XXPXXXR0R
DATE 製表日 2011/10/04	PAGE 張數 1 OF 1	REV. 版次 A	