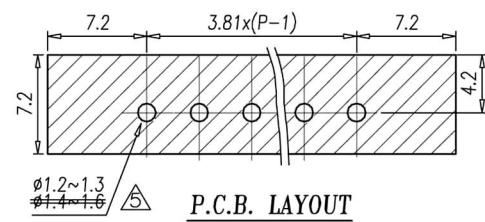
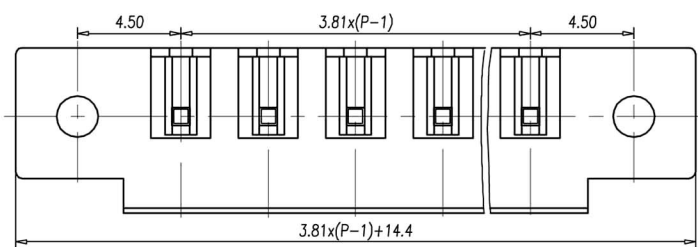


1 2 3 4 5 6 7 8

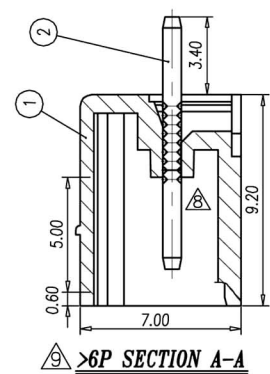
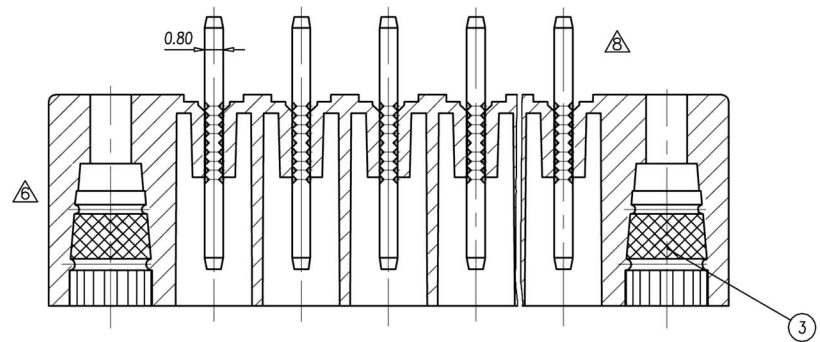
A
B
C
D
E
F
G
H



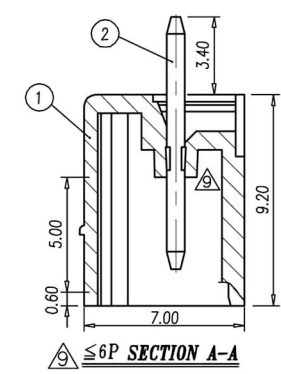
P.C.B. LAYOUT

- NOTES: \triangle 300
- Rating: ~~160V~~ 8A
PITCH: 3.81mm
 - Insulation Withstands Voltage:
AC 1000V/MIN
 - Insulation Resistance:
1000M Ω or more at DC500V
 - Using Temperature Range:
~~-40°C ~ +150°C~~
-40°C ~ +120°C
 - Screw Torque Value: 2kg-cm (MAX)
 - Suitable Electric Wire: AWG 22~16
 - Undimensioned Tolerances:

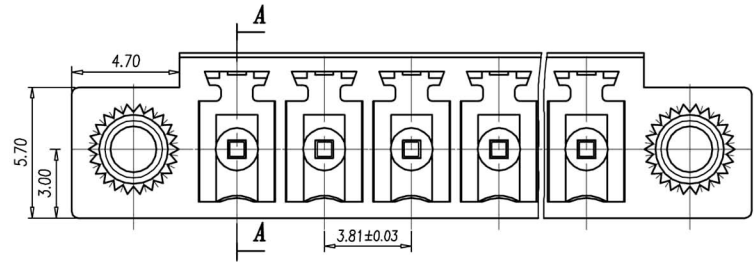
\square	\square	0.05/10
\square	\square	0.2/10
PITCH ERROR		0.05/10
UNDIMENSIONED TOLERANCES		± 0.3



>6P SECTION A-A



≤6P SECTION A-A



ITEM	NAME OF PART	Q'TY	MATERIAL	NOTES
3	NUT	2	BRONZE	M2.5
2	SOLDER PIN	P	COPPER	Tin Plated($\leq 6P$) \triangle
		P	COPPER	Tin Plated($> 6P$) \triangle
1	HOUSING	1	PBT	GREEN

RoHS Compliant		HSM 玄茂科技股份有限公司 HSUAN MAO TECHNOLOGY CO., LTD.	
APPD. 核准 Lynne		TOLERANCE 容許公差 .00 \pm .00 \pm ANG. \pm	PART NAME 品名 3.81mm P.C.B. TERMINAL BLOCK XXP STRAIGHT TYPE WITH EAR(SCREW) TIN PLATED GREEN INSULATOR ROHS
DWG. 製圖 Hedy	SCALE 比例 參考	UNIT 單位 MM	PART NO. 料號 C0913-XXSYTE00R
DATE 制表日 2007/12/13	PAGE 張數 1 / 1	SIZE 紙張尺寸 A 4	REV. 版本 A

1 2 3 4 5 6 7 8