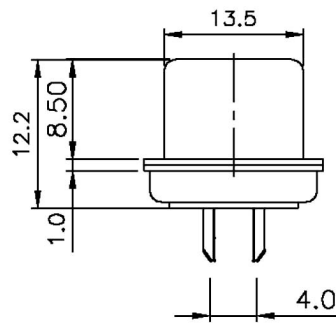
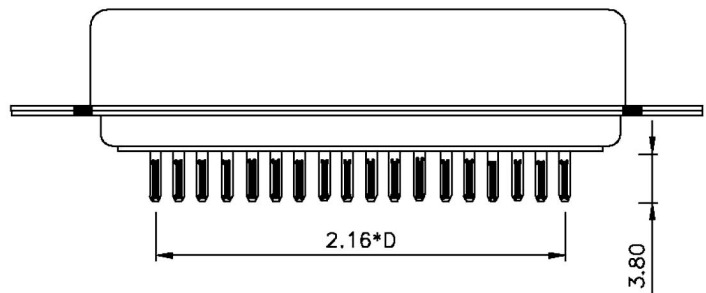
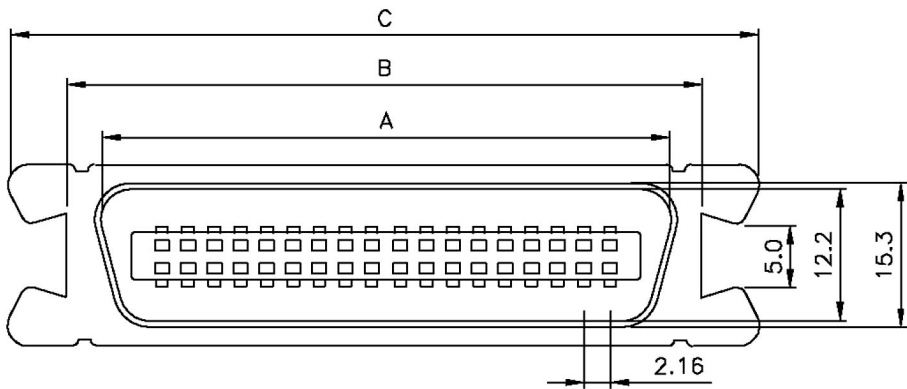


1 2 3 4 5 6 7 8

A
B
C
D
E
F
G
H

A
B
C
D
E
F
G
H



INSULATOR - P.B.T. +30%GLASS FIBER
 UL 94V-0
 CONTACT - PHOSPHOR BRONZE
 SHELL FINISH - STEEL NICKEL PLATED
 HOOD - STEEL
 PLATING - CONTACT
 1. GOLD FLASH (COMPLETE)
 2. SELECTIVE GOLD OVER NICKEL PLATED
 (CONTACT AREA) TIN OVER NICKEL PLATED (TAIL AREA)
 - SHELL
 NICKEL OVER COPPER PLATED
 - HOOD
 NICKEL OVER COPPER PLATED

ELECTRICAL CHARACTERISTICS

RATING CURRENT : 5 AMP
 CONTACT RESISTANCE : < 25 MILLIOHM
 INSULATION RESISTANCE : > 1000 MEGOHM AT 500V
 DIELECTRIC VOLTAGE : 1000V AT 1 MINUTE
 OPERATION TEMPERATURE : -55°C TO +105°C

APPLIED TO WAVE SOLDER CAPABLE TO 240°

POSITION	A	B	C	D
14M	25.50	29.40	38.50	6
24M	36.30	40.20	49.30	11
36M	49.30	53.50	62.00	17
50M	64.40	68.30	77.40	24

APPD. 核准 BETTY		TOLERANCE 容許公差 .0 ± .00 ± ANG. ±	PART NAME 品名 CENTRONIC MOLDED TYPE XXM W/O LATCH NICKEL SHELL SELECTIVE GOLD PLATING BULE INSULATOR
DWG. 製圖 BETTY	UNIT 單位 MM	SIZE. 紙張尺寸 A 4	PART NO. 料號 C0710-XXMC0SL0R
PAGE 張數 1 OF 1	REV. 版次 A		

1 2 3 4 5 6 7 8