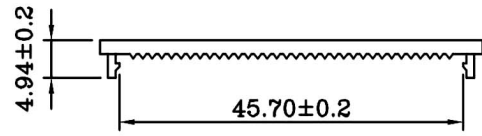
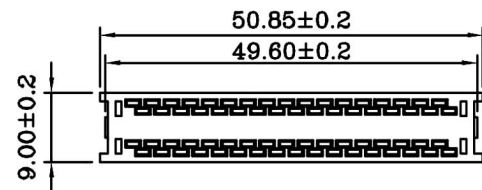
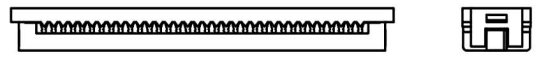
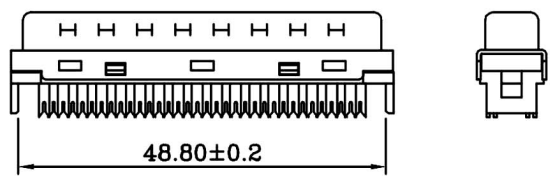


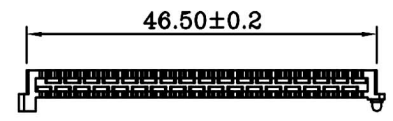
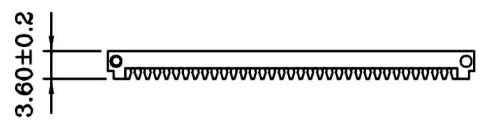
1 2 3 4 5 6 7 8

A
B
C
D
E
F
G
H

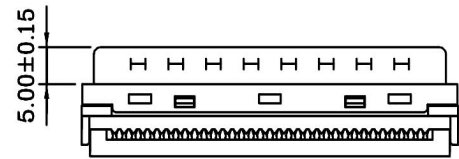
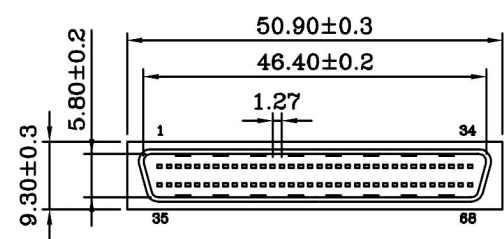
A
B
C
D
E
F
G
H



Termination Cover
(1 Places)



Wire Holder:0.62mm
(2 Places)



● **MATERIALS: (RoHS Compliant)**

Housing And Cover : Plastic Thermoplastic
P.B.T UL94V-0 Black

Contacts : Phosphor Bronze Gold
Selective Plated

Front Shell : Steel Nickel Plated
Over Copper

● **ELECTRICAL CHARACTERISTICS:**

Contact Current Rating: 0.5 Amp
Dielectric Withstanding Voltage: 500V AC
Insulation Resistance: >500MΩ/Min
Contact Resistance: 35mΩ/Max
Operation Temperature: -55°C ~ +85°C

RoHS
Compliant

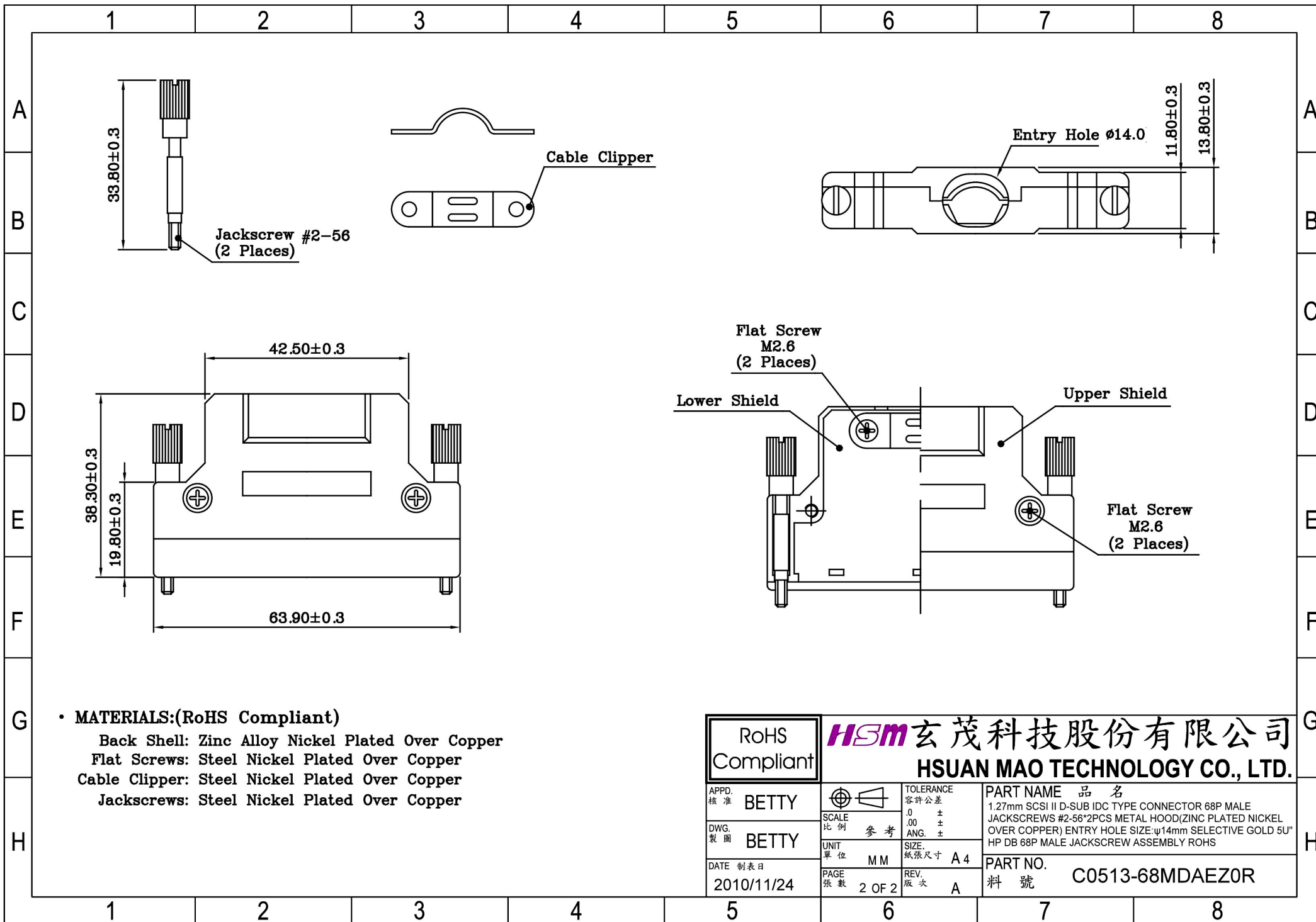
HSM 玄茂科技股份有限公司
HSUAN MAO TECHNOLOGY CO., LTD.

APPD. 核准	Betty	DATE 制表日	2015/02/10
DWG. 製圖		PAGE 張數	1 OF 1

SCALE 比例	參考
UNIT 單位	MM
TOLERANCE 容許公差	.0 ± 0.30 .00 ± 0.20 ANG. ± 3°
SIZE. 紙張尺寸	A 4
REV. 版次	B

PART NAME 品名	1.27mm SCSI II D-SUB IDC TYPE CONNECTOR 68P MALE JACKSCREWS #2-56*2PCS METAL HOOD (ZINC PLATED NICKEL OVER COPPER) ENTRY HOLE SIZE:φ14mm SELECTIVE GOLD 5U" HP DB 68P MALE JACKSCREW ASSEMBLY ROHS
PART NO.	料號 C0513-68MDAEZ0R

1 2 3 4 5 6 7 8



• **MATERIALS:(RoHS Compliant)**

- Back Shell: Zinc Alloy Nickel Plated Over Copper
- Flat Screws: Steel Nickel Plated Over Copper
- Cable Clipper: Steel Nickel Plated Over Copper
- Jackscrews: Steel Nickel Plated Over Copper

RoHS Compliant		HSM 玄茂科技股份有限公司 HSUAN MAO TECHNOLOGY CO., LTD.	
APPD. 核准 BETTY		TOLERANCE 容許公差 .0 ± .00 ± ANG. ±	PART NAME 品名 1.27mm SCSI II D-SUB IDC TYPE CONNECTOR 68P MALE JACKSCREWS #2-56*2PCS METAL HOOD(ZINC PLATED NICKEL OVER COPPER) ENTRY HOLE SIZE:φ14mm SELECTIVE GOLD 5U" HP DB 68P MALE JACKSCREW ASSEMBLY ROHS
DWG. 製圖 BETTY	SCALE 比例 參考	UNIT 單位 MM	PART NO. 料號 C0513-68MDAEZ0R
DATE 制表日 2010/11/24	PAGE 張數 2 OF 2	REV. 版次 A	