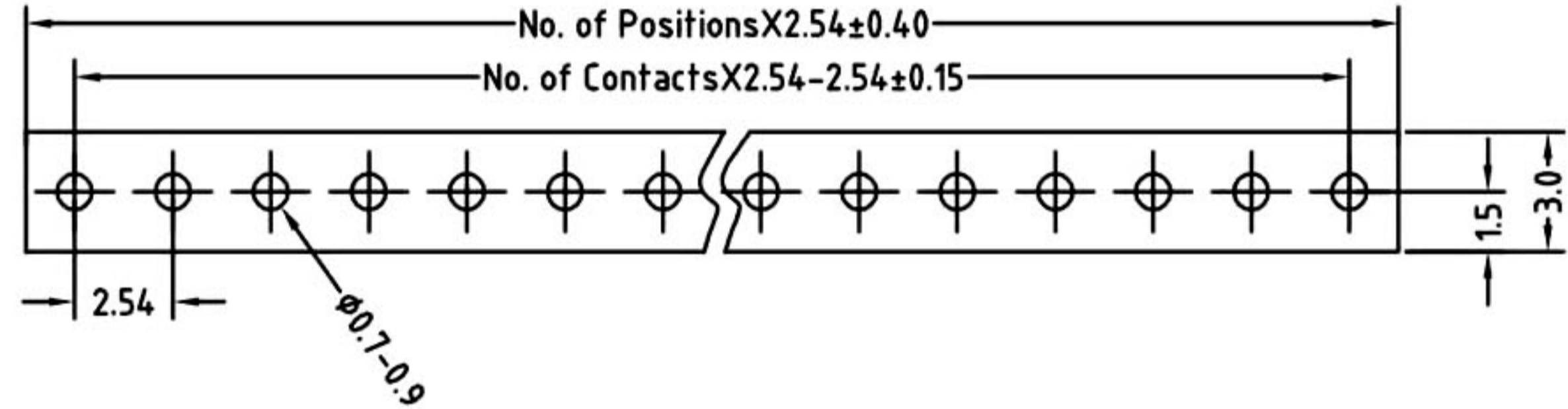
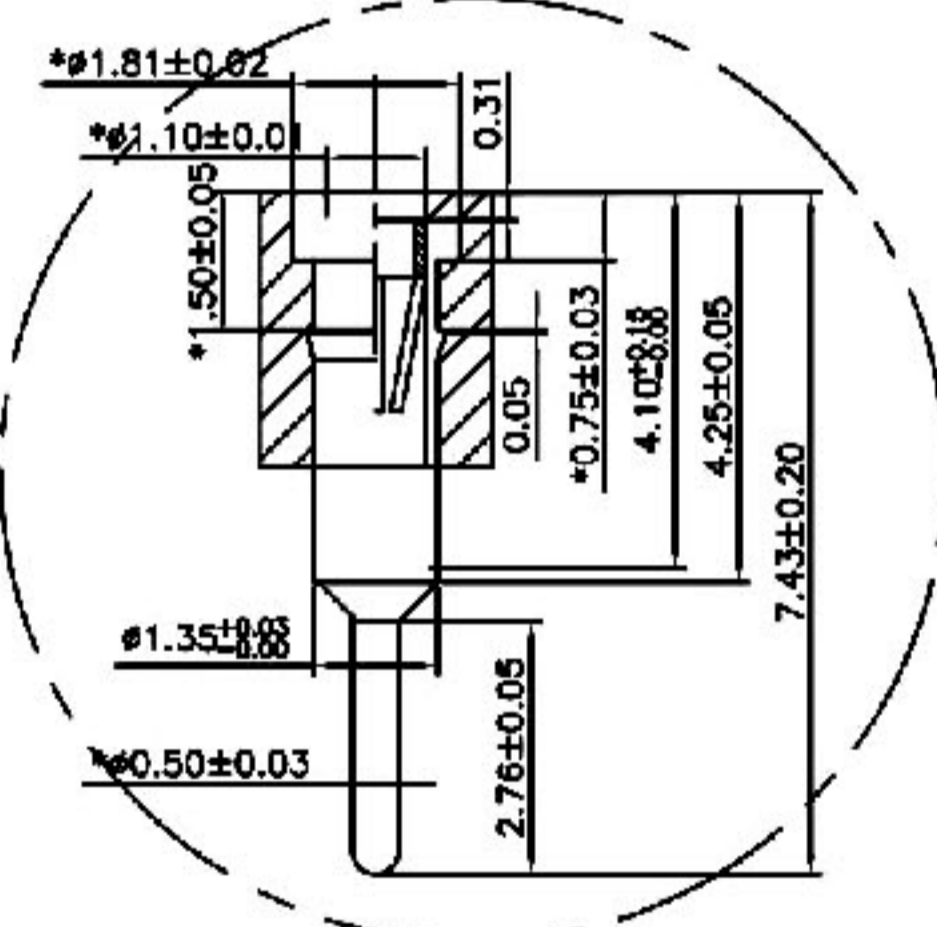
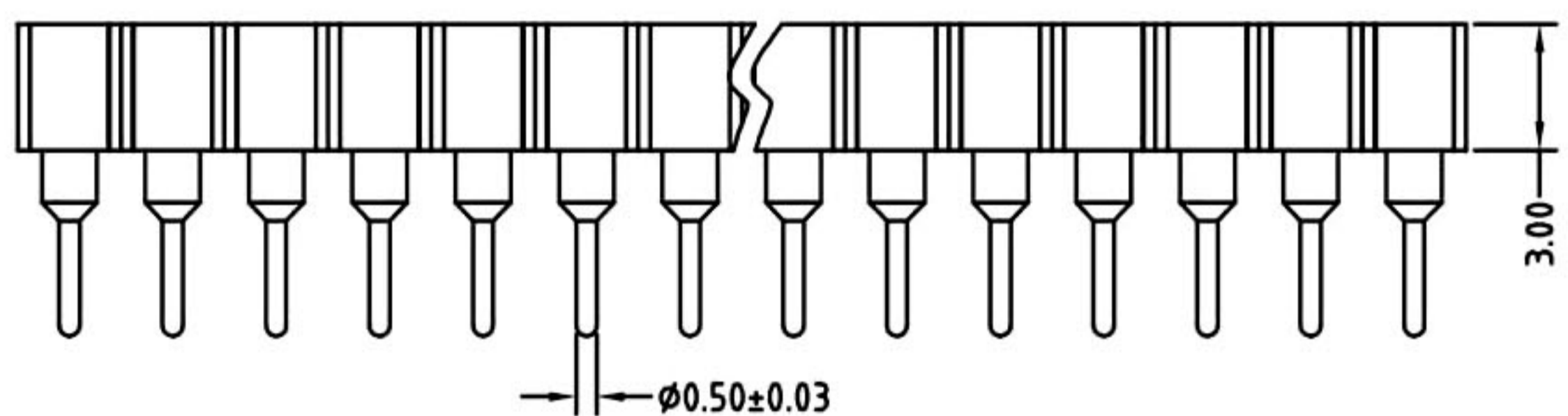
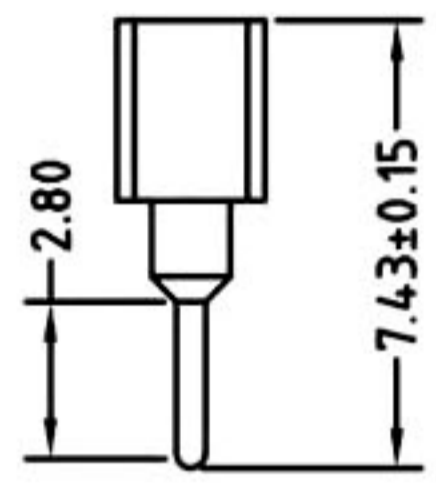
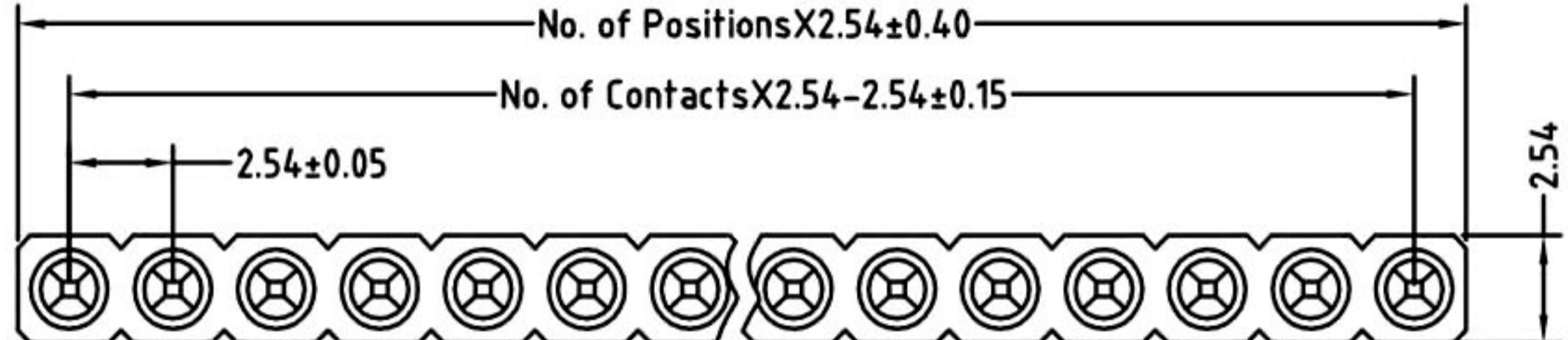


Technical Data

Material:
 Pin(outer sleeve): Brass,machined CuZn38Pb2
 Clip(cotact 4 finger): Phosphor Bronze
 Plating(outer sleeve):
 Tin plated:2um/80u"Ni, 5um/200u"Sn
 Gold Plsted:2um/80u"Ni,Full gold
 Plating(cotact): 2um/80u"Ni, gold or Tin plated
 Insulator(black): Glass filled thermoplastic polyester
 UL94V-0

Electrical:
 Current rating: 3Amps/contact max.
 Contact resistance: $\leq 4m\Omega$ /contact
 Insulation resistance: $\geq 1000M\Omega$ at V=100V
 Operaing voltage: 60VAC/DC

Mechanical:
 Average insertion force with steel pin of $\varnothing 0.43mm/0.017"$: <250g
 Average withdrawal force with steel pin of $\varnothing 0.43mm/0.017"$: >50g min.
 Mechanical life cycle:min.200
 Operaing temperatures: Gold Plsted:-55°FXC to+105°FXC
 Tin plated:-40°FXC to+105°FXC
 Soldering temperature: +260°FXC,10s max.



P.C.B LAYOUT

RoHS
Compliant

HSM 玄茂科技股份有限公司
HSUAN MAO TECHNOLOGY CO., LTD.

APPD. 核准	SCALE 比例 参考	TOLERANCE 容許公差	PART NAME 品名
DWG. 製圖 Helen		.0 ± 0.25 .00 ± 0.15 ANG. ±	
DATE 制表日 2012/4/17	UNIT 單位 MM	SIZE 紙張尺寸 A4	PART NO. 料號 C0112-XXSA(A, B)B00R
	PAGE 張數 1 OF 1	REV. 版本 A	