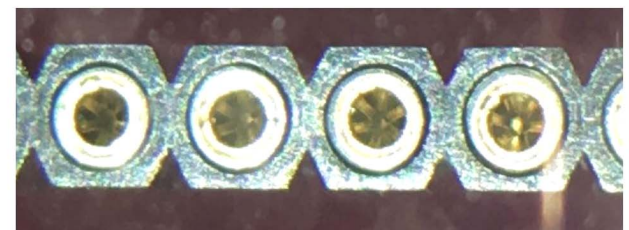


MATERIAL:
 PIN(OUTER SLEEVE): BRASS,MACHINED CUZN38PB2
 PLATING(OUTER SLEEVE):
 TIN PLATED:2MM/80M"NI, 5MM/200M"SN
 GOLD PLATED:2MM/80M"NI,FULL GOLD
 INSULATOR(BLACK): BLACK (PA46) UL94V-0

ELECTRICAL:
 CURRENT RATING: 1AMPS/CONTACT MAX.
 CONTACT RESISTANCE: $\leq 4M\Omega$ /CONTACT
 INSULATION RESISTANCE: $\geq 1000M\Omega$ AT $V=500V$
 DIELECTRIC WITHSTANDING VOLTAGE: 1000V AC MIN
 OPERAING VOLTAGE: 60VAC/DC

MECHANICAL:
 OPERAING TEMPERATURES: GOLD PLSTED:-55°C TO+125°C
 TIN
 PLATED:-40°C TO+105°C
 SOLDERING TEMPERATURE: +260°C,10S MAX.



RoHS Compliant		HSM 玄茂科技股份有限公司 HSUAN MAO TECHNOLOGY CO., LTD.	
APPD. 核准 HELEN	SCALE 比例 参考	TOLERANCE	PART NAME 品名
DWG. 製圖 ABBY		0. =±.25 0° =±3.0° 0.0 =±.2 0.0° =±2.5° 0.00=±.15 0.00° =±2.0°	2.54mm SIP SOCKET MACHINED PIN 6 FINGERED CLIP 1XXXP H=7.0mm PIN:TIN CLIP:GOLD PLATING DIP LENGTH 10.0mm BLACK COLOR ROHS
DATE 制表日 2016/10/24	UNIT 單位 M M	SIZE 紙張尺寸 A 4	PART NO. 料號 C0109-XXSBGB00R
	PAGE 張數 1 OF 1	REV. 版次 B	